



12.1" PCAP 10pt touchscreen solution for pick-up points

Built into a rugged, edge-to-edge glass bezel the ProLite TF1215MC-B1 guarantees high durability and scratch-resistance, making it perfect for high use public facing applications. Landscape, portrait and face-up orientation ensure flexibility in any type of installation. It can operate in temperatures ranging from -20°C to 60°C and is IP65 rated, resulting in dust and water resistance from the front making it a reliable solution for pick-up points and kiosks in semi-outside environments like petrol or train stations. For ease of integration, the TF1215MC-B1 can be equipped with optional external mounting brackets ([OMK3-1](#)) making it an ideal solution for kiosk integrators, industrial environments, control rooms and interactive multimedia.



Semi outdoor solution

The screen can operate in low and high temperatures and is IP65 rated resulting in dust and water resistance from the front making it a reliable solution for pick-up points and kiosks in environments like petrol or train stations. High brightness ensures legibility in any lighting conditions.



Touch through-glass

This through glass touch screen works right through glass and can turn glass surfaces into an interactive touch screen display. Use it on storefront windows, real estate office, in-store for POS or restaurants.

01 DISPLAY CHARACTERISTICS

| | |
|-------------------------|---|
| Design | Open Frame |
| Diagonal | 12.1", 31cm |
| Panel | IPS Technology |
| Native resolution | 1024 x 768 (0.8 megapixel) |
| Aspect ratio | 4:3 |
| Brightness | 540 cd/m² typical |
| Brightness | 450 cd/m² with touch |
| Static contrast | 1000:1 typical |
| Light transmittance | 85% |
| Response time (BTB) | 25ms |
| Viewing zone | horizontal/vertical: 178°/178°, right/left: 89°/89°, up/down: 89°/89° |
| Colour support | 16.2mIn (6bit + Hi-FRC) |
| Horizontal Sync | 31.4 - 60kHz |
| Viewable area W x H | 245.8 x 184.3mm, 9.7 x 7.2" |
| Pixel pitch | 0.24mm |
| Bezel colour and finish | black |

02 TOUCH

| | |
|-----------------------------|---|
| Touch technology | projective capacitive |
| Touch points | 10 (HID, only with supported OS) |
| Touch method | finger, glove (latex), capacitive stylus |
| Touch interface | USB |
| Supported operating systems | All iiyama monitors are Plug & Play and compatible with Windows and Linux. For details regarding the supported OS for the touch models, please refer to the driver instruction file available in the downloads section. |
| Through-Glass | 6mm |
| Palm rejection | yes |

03 INTERFACES / CONNECTORS / CONTROLS

| | |
|----------------------|---------------------------|
| Analog signal input | VGA x1 |
| Digital signal input | HDMI x1 DisplayPort x1 |
| Audio output | Mini jack x1 |
| HDCP | yes |

04 FEATURES

| | |
|---------------------------|---|
| Extra | anti-fingerprint coating, touch through-glass |
| Glass thickness | 3.15mm |
| Glass hardness | 7H |
| 60950 Ball drop test | yes |
| Water and dust protection | IP65 (front) |
| OSD key lock | yes |

05 GENERAL

| | |
|-----------------|--|
| OSD languages | EN, DE, FR, ES, IT, CN, JP |
| Control buttons | Menu, Scroll up / Brightness, Scroll down / Contrast, Select, Power |
| User controls | picture (contrast, brightness, H. position, V. position, phase, clock, auto adjust), advanced (colour temperature, sharpness), OSD (OSD timeout, OSD position, OSD H. position, OSD V. position, touch switch), option (reset, language, source select, display mode, factory) |
| Plug&Play | DDC2B |

06 MECHANICAL

| | |
|-------------------------------------|------------------------------|
| Orientation | landscape, portrait, face-up |
| VESA mounting | 100 x 100mm |
| Operation temperature range (-°/+°) | -20°C - 60°C |
| Storage temperature range | - 20°C - 60°C |

07 ACCESSORIES INCLUDED

| | |
|----------------|----------------------------------|
| Cables | power, USB, HDMI, DP |
| Guides | quick start guide, safety guide |
| Other | AC adapter, external control pad |
| Remote control | external control pad |

08 POWER MANAGEMENT

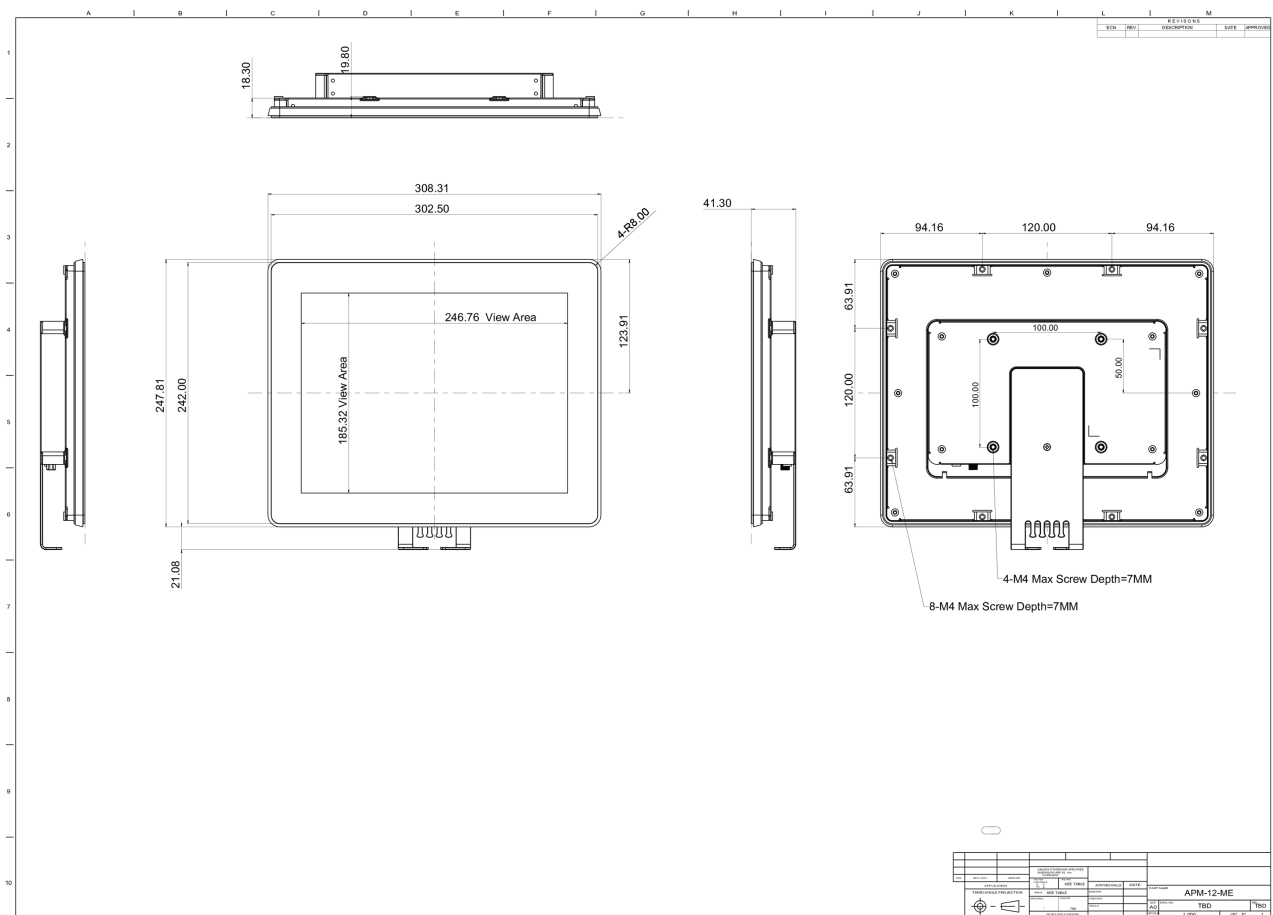
| | |
|-------------------|--|
| Power supply unit | external |
| Power supply | DC 12 V |
| Power usage | 10W typical, 0.55W stand by, 0.5W off mode |

09 SUSTAINABILITY

| | |
|-------------------------|--|
| Regulations | CE, EAC, RoHS support, ErP, WEEE, cULus, REACH |
| Energy efficiency class | B |

10 DIMENSIONS / WEIGHT

| | |
|------------------------------|----------------------|
| Product dimensions W x H x D | 308.5 x 248 x 41.5mm |
| Box dimensions W x H x D | 435 x 355 x 165mm |
| Weight (without box) | 2.1kg |
| Weight (with box) | 3.9kg |
| EAN code | 4948570118007 |



12 EU ENERGY EFFICIENCY LABEL

| | |
|---------------------------|----------------------------|
| Manufacturer | iiyama |
| Model | ProLite TF1215MC-B1 |
| Energy efficiency class | B |
| Visible screen diagonal | 31cm; 12.1"; (12" segment) |
| ON mode power consumption | 11W |
| Annual energy consumption | 16kWh/annum* |
| Power in Standby | 0.55W stand by |
| Power in OFF Mode | 0.5W off mode |
| Resolution | 1024 x 768 |

*This is information under Regulation (EU) No 1062/2010. *Based on the power consumption of the television operating 4 hours per day for 365 days. The actual energy consumption will depend on how the television is used.*

All trademarks and registered trademarks acknowledged. E & O E. Specification subject to change without notice. All LCD's comply with ISO-9241-307:2008 in connection with pixel defects.

© IIYAMA CORPORATION. ALL RIGHTS RESERVED